



**CREATIVE URBAN LIGHTING
FURNITURE**

FENCING SYSTEM (Patent pending)

NEW ALUMINUM POST AND PLANK ASSEMBLY
CHEMICALLY BOUNDED TOGETHER

DIGITALLY INKJET PRINTED SURFACES WITH
HIGH-DEFINITION IMAGES OF VARIOUS TEXTURES

TOTALLY PREWIRED LOW VOLTAGE (24 VDC)

INTEGRATED LED ACCENTS

UV CLEAR COAT " DUROCLEAR " TO PROTECT
AGAINST FADING

BRINGING TO LIFE A NEW
AESTHETIC DIMENSION WITH
UNIQUE LIGHT SIGNATURE

www.zilux.com



TECHNICAL SHEET

FENCING SYSTEM (Patent pending)

ALUMINUM POST

DIMENSIONS: 4" x 4"
CUT TO SPECIFIED HEIGHTS.
NEW ARCHITECTURAL POST
ASSEMBLY, CHEMICALLY
BOUNDED TOGETHER.
THE POST IS PREWIRED 24 VOLTS.

CAP

CASTING AND SCREWED ONTO
TOP OF POST.

PICKET

AVAILABLE SIZES:
1" x 1" x 10' long
1" x 2" x 10' long
1" x 4" x 10' long
PICKETS ARE CUT AND INSERTED
INTO HORIZONTAL PLANKS.

LED ACCENT

STANDARD WHITE STRIPS LED INTEGRATED ON
THE 4 CORNERS OF THE POST ARE HIDDEN BY
AN ACRYLIC STRIPE PRINTED WITH THE SAME
TEXTURE AS POST (24 VDC).

CHOICE OF LED COLORS AVAILABLE IN OPTION:



DRIVER

MOUNTED BEHIND ONE POST, THE
DRIVER IS INCLUDED. THE DRIVER
INCLUDES 5 OPTIONS DIMMING (RX,
TRIAC, 0-10 V, 1-10 V, 10 V PWM).

OPERATING TEMPERATURE:
-40 °C TO 70 °C.

RAILING

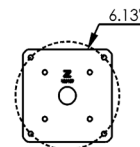
UPPER AND LOWER RAILING IS
THE SAME PART (TRACKED TO
RECEIVE PICKET) COMPLETED WITH
SUSPENSION BRACKETS.

CLIP-ON CAP SPACERS

CUT AND INSERTED INTO THE
RAIL, THE CLIP-ON CAP ALLOWS
THE DESIRED SPACING BETWEEN
THE PICKETS.

BASE PLATE AND COVER

BOLT CIRCLE (IMAGE).
PAINTED BASE COVER.



"DUROCLEAR" COATING

APPLICATION OF A PROTECTIVE UV
CLEAR COAT "DUROCLEAR" TO
INCREASE LONG-TERM DURABILITY,
PROTECT AGAINST FADING AND
EXTEND LIFE WEATHERING.

DIGITAL PRINTING

DIGITALLY INKJET PRINTED
SURFACES WITH HIGH-DEFINITION
IMAGES OF VARIOUS TEXTURES.