



CREATIVE URBAN LIGHTING AND FURNITURE

LIGHTPOST

MODEL P1

(Patent pending)

NEW ALUMINUM TAPERED POLE ASSEMBLY
CHEMICALLY BOUNDED TOGETHER

DIGITALLY INKJET PRINTED SURFACES WITH
HIGH-DEFINITION IMAGES OF VARIOUS TEXTURES

TOTALLY PREWIRED LOW VOLTAGE (24 VDC)

INTEGRATED LED ACCENTS

UV CLEAR COAT "DUROCLEAR" TO PROTECT
AGAINST FADING

MINI LIGHTPOST

MODEL MP1



zilux[™]
AESTHETICALLY LUMINOUS

BRINGING TO LIFE A NEW
AESTHETIC DIMENSION WITH
UNIQUE LIGHT SIGNATURE

Phone: 418 842-3222 | www.zilux.com

LIGHTPOST MODEL P1

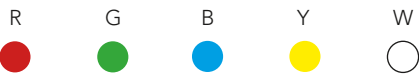
(Patent pending)

LUMINAIRE

PLANK 1" x 24" WITH 2 INTEGRATED UNIVERSAL SEALED LED MODULES ADJUSTED TO 16 WATTS EACH (0-20 WATTS MAX) OFFERED IN TYPE II, III OR V LIGHT DISTRIBUTION.
(UP TO 140 LUMENS PER WATT)

LED ACCENT

STANDARD WHITE STRIPS LED INTEGRATED ON 2 SIDES OF THE LUMINAIRE AND THE 4 CORNERS OF THE POLE ARE HIDDEN BY AN ACRYLIC STRIPE PRINTED WITH THE SAME TEXTURE AS POLE.
OTHER COLORS AVAILABLE FOR EACH ON REQUEST



24 VOLTS SYSTEM

THE LAMPPOST IS PREWIRED 24 VOLTS AND INTEGRATES A UNIVERSAL TWIST-LOCK TENON FOR QUICK AND SAFE WIRELESS CONNECTION.

ALUMINUM TAPERED POLE

NEW ARCHITECTURAL TAPERED POLE ASSEMBLY, CHEMICALLY BOUNDED TOGETHER. TESTED TO WITHSTAND GREATER LOADS AND WINDS ALMOST TWICE THAT OF REGULAR ALUMINUM POLE.
(REFER TO OUR WEBSITE FOR TESTS)

DIGITAL PRINTING

DIGITALLY INKJET PRINTED SURFACES WITH HIGH-DEFINITION IMAGES OF VARIOUS TEXTURES.

"DUROCLEAR" COATING

APPLICATION OF A PROTECTIVE UV CLEAR COAT "DUROCLEAR" TO INCREASE LONG-TERM DURABILITY, PROTECT AGAINST FADING AND EXTEND LIFE WEATHERING.

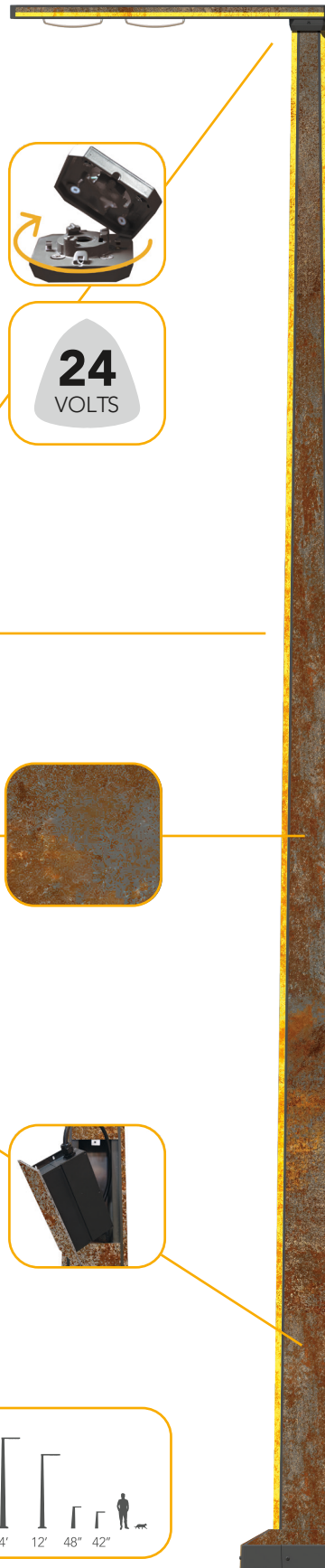
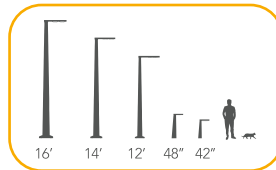
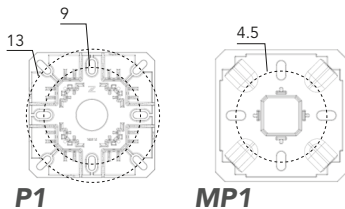
DRIVER

MOUNTED BEHIND THE ACCESS DOOR, THE DRIVER INTEGRATES A DIMMER AND IS COMPATIBLE WITH ANY REMOTE CONTROL SYSTEMS AVAILABLE IN THE MARKET.

BASE PLATE AND BASE COVER

BOLT CIRCLES (IMAGES)

DIGITALLY PRINTED BASE COVER



zlux[™]
AESTHETICALLY LUMINOUS

MINI LIGHTPOST MODEL MP1

PLANK 1" x 12"
1 LED MODULE





CREATIVE URBAN LIGHTING AND FURNITURE

LIGHTPOST

MODEL V (Patent pending)

NEW ALUMINUM TAPERED POLE ASSEMBLY
CHEMICALLY BOUNDED TOGETHER

DIGITALLY INKJET PRINTED SURFACES WITH
HIGH-DEFINITION IMAGES OF VARIOUS TEXTURES

TOTALLY PREWIRED LOW VOLTAGE (24 VDC)

INTEGRATED LED ACCENTS

UV CLEAR COAT " DUROCLEAR " TO PROTECT
AGAINST FADING

MINI LIGHTPOST

MODEL MV



zilux[™]
AESTHETICALLY LUMINOUS

BRINGING TO LIFE A NEW
AESTHETIC DIMENSION WITH
UNIQUE LIGHT SIGNATURE

Phone: 418 842-3222 | www.zilux.com

LIGHTPOST MODEL V

(Patent pending)

LUMINAIRE

POST TOP SQUARE SHAPE WITH SIDE LENSES.

*GRAPHIC OPTIONALLY AVAILABLE

4 INTEGRATED UNIVERSAL SEALED LED MODULES
ADJUSTED TO 16 WATTS EACH (0-20 WATTS MAX)
OFFERED IN TYPE II, III OR V LIGHT DISTRIBUTION.
(UP TO 140 LUMENS PER WATT)

LED ACCENT

STANDARD WHITE STRIPS LED INTEGRATED ON
4 SIDES OF THE LUMINAIRE AND THE 4 CORNERS
OF THE POLE ARE HIDDEN BY AN ACRYLIC STRIPE
PRINTED WITH THE SAME TEXTURE AS POLE.
OTHER COLORS AVAILABLE FOR EACH ON REQUEST

R G B Y W

24 VOLTS SYSTEM

THE LAMPPOST IS PREWIRED 24 VOLTS AND
INTEGRATES A UNIVERSAL TWIST-LOCK TENON
FOR QUICK AND SAFE WIRELESS CONNECTION.



ALUMINUM TAPERED POLE

NEW ARCHITECTURAL TAPERED POLE ASSEMBLY,
CHEMICALLY BOUNDED TOGETHER. TESTED TO
WITHSTAND GREATER LOADS AND WINDS ALMOST
TWICE THAT OF REGULAR ALUMINUM POLE.
(REFER TO OUR WEBSITE FOR TESTS)



DIGITAL PRINTING

DIGITALLY INKJET PRINTED SURFACES WITH
HIGH-DEFINITION IMAGES OF VARIOUS TEXTURES.

"DUROCLEAR" COATING

APPLICATION OF A PROTECTIVE UV CLEAR COAT
"DUROCLEAR" TO INCREASE LONG-TERM
DURABILITY, PROTECT AGAINST FADING AND
EXTEND LIFE WEATHERING.

DRIVER

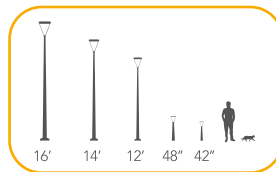
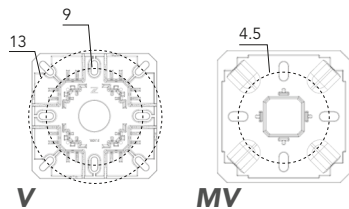
MOUNTED BEHIND THE ACCESS DOOR, THE DRIVER
INTEGRATES A DIMMER AND IS COMPATIBLE WITH
ANY REMOTE CONTROL SYSTEMS AVAILABLE IN THE
MARKET.



BASE PLATE AND BASE COVER

BOLT CIRCLES (IMAGES)

DIGITALLY PRINTED BASE COVER



ZIUXTM
AESTHETICALLY LUMINOUS

**MINI LIGHTPOST
MODEL MV**
1 LED MODULE





CREATIVE URBAN LIGHTING AND FURNITURE

LIGHTPOST

MODEL F (Patent pending)

NEW ALUMINUM TAPERED POLE ASSEMBLY
CHEMICALLY BOUNDED TOGETHER

DIGITALLY INKJET PRINTED SURFACES WITH
HIGH-DEFINITION IMAGES OF VARIOUS TEXTURES

TOTALLY PREWIRED LOW VOLTAGE (24 VDC)

INTEGRATED LED ACCENTS

UV CLEAR COAT " DUROCLEAR " TO PROTECT
AGAINST FADING

MINI LIGHTPOST

MODEL MF



zilux[™]
AESTHETICALLY LUMINOUS

BRINGING TO LIFE A NEW
AESTHETIC DIMENSION WITH
UNIQUE LIGHT SIGNATURE

Phone: 418 842-3222 | www.zilux.com

LIGHTPOST MODEL F

(Patent pending)

LUMINAIRE

POST TOP SQUARE FLAT SHAPE WITH 4 INTEGRATED UNIVERSAL SEALED LED MODULES ADJUSTED TO 16 WATTS EACH (0-20 WATTS MAX) OFFERED IN TYPE II, III OR V LIGHT DISTRIBUTION. (UP TO 140 LUMENS PER WATT)

LED ACCENT

STANDARD WHITE STRIPS LED INTEGRATED ON 4 LEGS OF THE LUMINAIRE AND THE 4 CORNERS OF THE POLE ARE HIDDEN BY AN ACRYLIC STRIPE PRINTED WITH THE SAME TEXTURE AS POLE. OTHER COLORS AVAILABLE FOR EACH ON REQUEST

R G B Y W

● ● ● ● ○

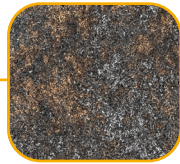
24 VOLTS SYSTEM

THE LAMPOST IS PREWIRED 24 VOLTS AND INTEGRATES A UNIVERSAL TWIST-LOCK TENON FOR QUICK AND SAFE WIRELESS CONNECTION.



ALUMINUM TAPERED POLE

NEW ARCHITECTURAL TAPERED POLE ASSEMBLY, CHEMICALLY BOUNDED TOGETHER. TESTED TO WITHSTAND GREATER LOADS AND WINDS ALMOST TWICE THAT OF REGULAR ALUMINUM POLE. (REFER TO OUR WEBSITE FOR TESTS)



DIGITAL PRINTING

DIGITALLY INKJET PRINTED SURFACES WITH HIGH-DEFINITION IMAGES OF VARIOUS TEXTURES.

"DUROCLEAR" COATING

APPLICATION OF A PROTECTIVE UV CLEAR COAT "DUROCLEAR" TO INCREASE LONG-TERM DURABILITY, PROTECT AGAINST FADING AND EXTEND LIFE WEATHERING.

DRIVER

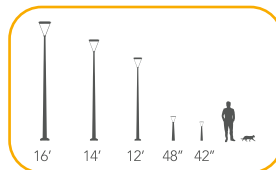
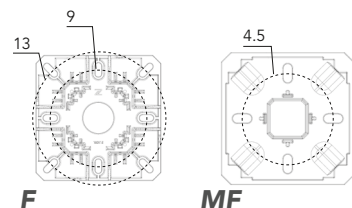
MOUNTED BEHIND THE ACCESS DOOR, THE DRIVER INTEGRATES A DIMMER AND IS COMPATIBLE WITH ANY REMOTE CONTROL SYSTEMS AVAILABLE IN THE MARKET.



BASE PLATE AND BASE COVER

BOLT CIRCLES (IMAGES)

DIGITALLY PRINTED BASE COVER



ZIUXTM
AESTHETICALLY LUMINOUS

**MINI LIGHTPOST
MODEL MF**
1 LED MODULE





CREATIVE URBAN LIGHTING AND FURNITURE

LIGHTPOST

MODEL T1 (Patent pending)

NEW ALUMINUM TAPERED POLE ASSEMBLY
CHEMICALLY BOUNDED TOGETHER

DIGITALLY INKJET PRINTED SURFACES WITH
HIGH-DEFINITION IMAGES OF VARIOUS TEXTURES

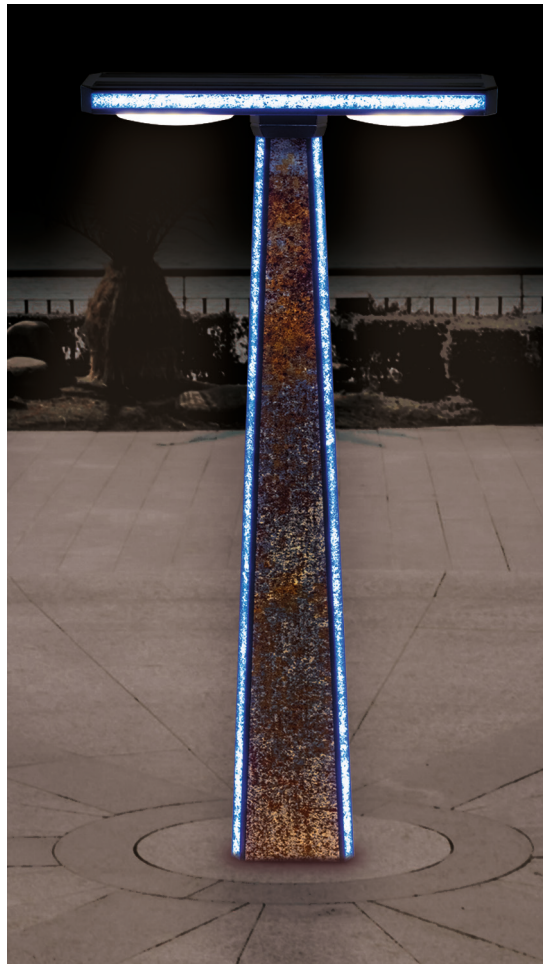
TOTALLY PREWIRED LOW VOLTAGE (24 VDC)

INTEGRATED LED ACCENTS

UV CLEAR COAT " DUROCLEAR " TO PROTECT
AGAINST FADING

MINI LIGHTPOST

MODEL MT1



zilux[™]
AESTHETICALLY LUMINOUS

BRINGING TO LIFE A NEW
AESTHETIC DIMENSION WITH
UNIQUE LIGHT SIGNATURE

Phone: 418 842-3222 | www.zilux.com

LIGHTPOST MODEL T1

(Patent pending)

LUMINAIRE

PLANK 1" x 48" WITH 4 INTEGRATED UNIVERSAL SEALED LED MODULES ADJUSTED TO 16 WATTS EACH (0-20 WATTS MAX) OFFERED IN TYPE II, III OR V LIGHT DISTRIBUTION.
(UP TO 140 LUMENS PER WATT)

LED ACCENT

STANDARD WHITE STRIPS LED INTEGRATED ON 2 SIDES OF THE LUMINAIRE AND THE 4 CORNERS OF THE POLE ARE HIDDEN BY AN ACRYLIC STRIPE PRINTED WITH THE SAME TEXTURE AS POLE.
OTHER COLORS AVAILABLE FOR EACH ON REQUEST

R G B Y W

● ● ● ● ○

24 VOLTS SYSTEM

THE LAMPPOST IS PREWIRED 24 VOLTS AND INTEGRATES A UNIVERSAL TWIST-LOCK TENON FOR QUICK AND SAFE WIRELESS CONNECTION.

ALUMINUM TAPERED POLE

NEW ARCHITECTURAL TAPERED POLE ASSEMBLY, CHEMICALLY BOUNDED TOGETHER. TESTED TO WITHSTAND GREATER LOADS AND WINDS ALMOST TWICE THAT OF REGULAR ALUMINUM POLE.
(REFER TO OUR WEBSITE FOR TESTS)

DIGITAL PRINTING

DIGITALLY INKJET PRINTED SURFACES WITH HIGH-DEFINITION IMAGES OF VARIOUS TEXTURES.

"DUROCLEAR" COATING

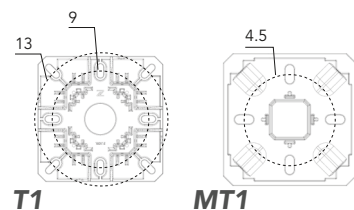
APPLICATION OF A PROTECTIVE UV CLEAR COAT "DUROCLEAR" TO INCREASE LONG-TERM DURABILITY, PROTECT AGAINST FADING AND EXTEND LIFE WEATHERING.

DRIVER

MOUNTED BEHIND THE ACCESS DOOR, THE DRIVER INTEGRATES A DIMMER AND IS COMPATIBLE WITH ANY REMOTE CONTROL SYSTEMS AVAILABLE IN THE MARKET.

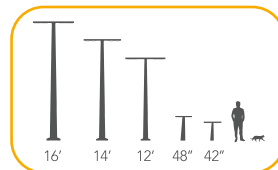
BASE PLATE AND BASE COVER

BOLT CIRCLES (IMAGES)
DIGITALLY PRINTED BASE COVER



T1

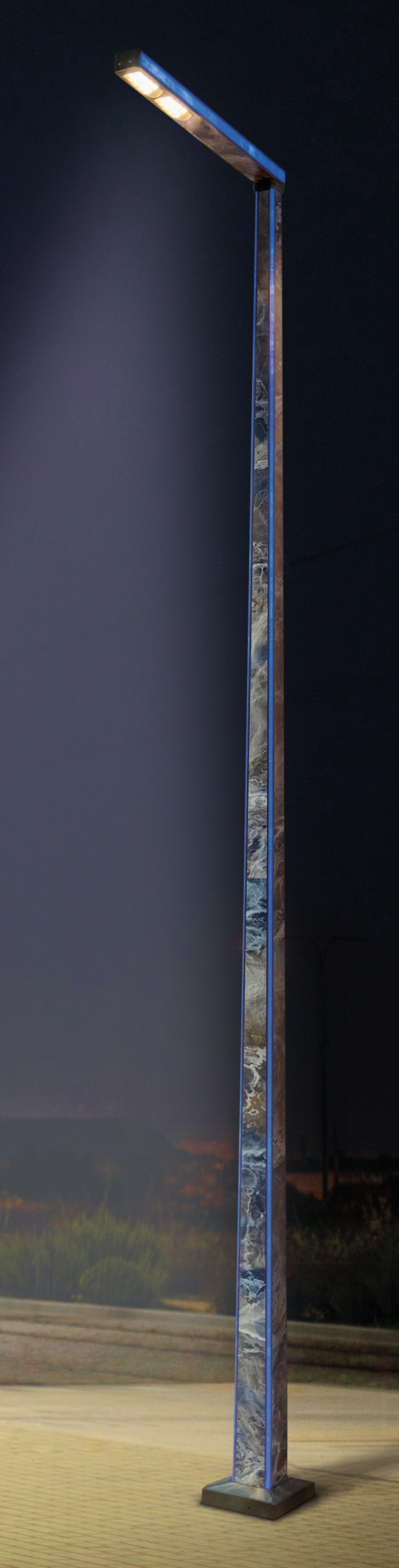
MT1



zluxTM
AESTHETICALLY LUMINOUS

MINI LIGHTPOST MODEL MT1
PLANK 1" x 18"
2 LED MODULES





CREATIVE URBAN LIGHTING AND FURNITURE

LIGHTPOST

MODEL P2

(Patent pending)

NEW ALUMINUM TAPERED POLE ASSEMBLY
CHEMICALLY BOUNDED TOGETHER

DIGITALLY INKJET PRINTED SURFACES WITH
HIGH-DEFINITION IMAGES OF VARIOUS TEXTURES

TOTALLY PREWIRED LOW VOLTAGE (24 VDC)

INTEGRATED LED ACCENTS

UV CLEAR COAT " DUROCLEAR " TO PROTECT
AGAINST FADING



zilux[™]
AESTHETICALLY LUMINOUS

BRINGING TO LIFE A NEW
AESTHETIC DIMENSION WITH
UNIQUE LIGHT SIGNATURE

Phone: 418 842-3222 | www.zilux.com

LIGHTPOST MODEL P2

(Patent pending)

LUMINAIRE

PLANK 2" x 24" WITH 2 INTEGRATED UNIVERSAL SEALED LED MODULES ADJUSTED TO 16 WATTS EACH (0-20 WATTS MAX) OFFERED IN TYPE II, III OR V LIGHT DISTRIBUTION.

(UP TO 140 LUMENS PER WATT)

*MORE LED MODULE OPTIONALLY AVAILABLE

LED ACCENT

STANDARD WHITE STRIPS LED INTEGRATED ON 2 SIDES OF THE LUMINAIRE AND THE 4 CORNERS OF THE POLE ARE HIDDEN BY AN ACRYLIC STRIPE PRINTED WITH THE SAME TEXTURE AS POLE.

OTHER COLORS AVAILABLE FOR EACH ON REQUEST

R G B Y W RGBW



24 VOLTS SYSTEM

THE LAMPPOST IS PREWIRED 24 VOLTS AND INTEGRATES A UNIVERSAL TWIST-LOCK TENON FOR QUICK AND SAFE WIRELESS CONNECTION.

ALUMINUM TAPERED POLE

NEW ARCHITECTURAL TAPERED POLE ASSEMBLY, CHEMICALLY BOUNDED TOGETHER. TESTED TO WITHSTAND GREATER LOADS AND WINDS ALMOST TWICE THAT OF REGULAR ALUMINUM POLE.

(REFER TO OUR WEBSITE FOR TESTS)



DIGITAL PRINTING

DIGITALLY INKJET PRINTED SURFACES WITH HIGH-DEFINITION IMAGES OF VARIOUS TEXTURES.

"DUROCLEAR" COATING

APPLICATION OF A PROTECTIVE UV CLEAR COAT "DUROCLEAR" TO INCREASE LONG-TERM DURABILITY, PROTECT AGAINST FADING AND EXTEND LIFE WEATHERING.

DRIVER

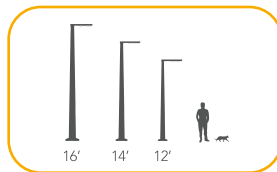
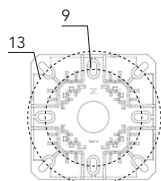
MOUNTED BEHIND THE ACCESS DOOR, THE DRIVER INTEGRATES A DIMMER AND IS COMPATIBLE WITH ANY REMOTE CONTROL SYSTEMS AVAILABLE IN THE MARKET.



BASE PLATE AND BASE COVER

BOLT CIRCLES (IMAGE)

DIGITALLY PRINTED BASE COVER



ZILUXTM
AESTHETICALLY LUMINOUS



CREATIVE URBAN LIGHTING AND FURNITURE

LIGHTPOST

MODEL T2

(Patent pending)

NEW ALUMINUM TAPERED POLE ASSEMBLY
CHEMICALLY BOUNDED TOGETHER

DIGITALLY INKJET PRINTED SURFACES WITH
HIGH-DEFINITION IMAGES OF VARIOUS TEXTURES

TOTALLY PREWIRED LOW VOLTAGE (24 VDC)

INTEGRATED LED ACCENTS

UV CLEAR COAT " DUROCLEAR " TO PROTECT
AGAINST FADING



zilux[™]
AESTHETICALLY LUMINOUS

BRINGING TO LIFE A NEW
AESTHETIC DIMENSION WITH
UNIQUE LIGHT SIGNATURE

Phone: 418 842-3222 | www.zilux.com

LIGHTPOST MODEL T2

(Patent pending)

LUMINAIRE

PLANK 2" x 48" WITH 4 INTEGRATED UNIVERSAL SEALED LED MODULES ADJUSTED TO 16 WATTS EACH (0-20 WATTS MAX) OFFERED IN TYPE II, III OR V LIGHT DISTRIBUTION.

(UP TO 140 LUMENS PER WATT)

*MORE LED MODULE OPTIONNALLY AVAILABLE

LED ACCENT

STANDARD WHITE STRIPS LED INTEGRATED ON 2 SIDES OF THE LUMINAIRE AND THE 4 CORNERS OF THE POLE ARE HIDDEN BY AN ACRYLIC STRIPE PRINTED WITH THE SAME TEXTURE AS POLE.

OTHER COLORS AVAILABLE FOR EACH ON REQUEST

R G B Y W RGBW



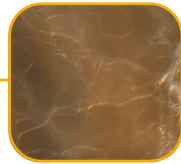
24 VOLTS SYSTEM

THE LAMPOST IS PREWIRED 24 VOLTS AND INTEGRATES A UNIVERSAL TWIST - LOCK TENON FOR QUICK AND SAFE WIRELESS CONNECTION.

ALUMINUM TAPERED POLE

NEW ARCHITECTURAL TAPERED POLE ASSEMBLY, CHEMICALLY BOUNDED TOGETHER. TESTED TO WITHSTAND GEATER LOADS AND WINDS ALMOST TWICE THAT OF REGULAR ALUMINUM POLE.

(REFER TO OUR WEBSITE FOR TESTS)



DIGITAL PRINTING

DIGITALLY INKJET PRINTED SURFACES WITH HIGH - DEFINITION IMAGES OF VARIOUS TEXTURES.

" DUROCLEAR " COATING

APPLICATION OF A PROTECTIVE UV CLEAR COAT " DUROCLEAR " TO INCREASE LONG - TERM DURABILITY, PROTECT AGAINST FADING AND EXTEND LIFE WEATHERING.

DRIVER

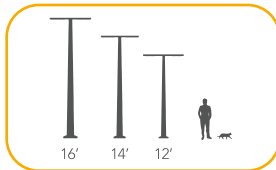
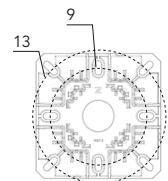
MOUNTED BEHIND THE ACCESS DOOR, THE DRIVER INTEGRATES A DIMMER AND IS COMPATIBLE WITH ANY REMOTE CONTROL SYSTEMS AVAILABLE IN THE MARKET.



BASE PLATE AND BASE COVER

BOLT CIRCLES (IMAGE)

DIGITALLY PRINTED BASE COVER



zluxTM
AESTHETICALLY LUMINOUS



CREATIVE URBAN LIGHTING AND FURNITURE

LIGHTPOST

MODEL R (Patent pending)

NEW ALUMINUM TAPERED POLE ASSEMBLY
CHEMICALLY BOUNDED TOGETHER

DIGITALLY INKJET PRINTED SURFACES WITH
HIGH-DEFINITION IMAGES OF VARIOUS TEXTURES

TOTALLY PREWIRED LOW VOLTAGE (24 VDC)

INTEGRATED LED ACCENTS

UV CLEAR COAT " DUROCLEAR " TO PROTECT
AGAINST FADING



zilux[™]
AESTHETICALLY LUMINOUS

BRINGING TO LIFE A NEW
AESTHETIC DIMENSION WITH
UNIQUE LIGHT SIGNATURE

Phone: 418 842-3222 | www.zilux.com

LIGHTPOST MODEL R

(Patent pending)

LUMINAIRE

POST TOP ROUND SHAPE WITH INJECTED MOLDED LENS.

*GRAPHIC OPTIONALLY AVAILABLE

4 INTEGRATED UNIVERSAL SEALED LED MODULES
ADJUSTED TO 16 WATTS EACH (0 - 20 WATTS MAX)
OFFERED IN TYPE II, III OR V, LIGHT DISTRIBUTION.

(UP TO 140 LUMENS PER WATT)

(REFER TO OUR WEBSITE)

LED ACCENT

STANDARD WHITE STRIPS LED INTEGRATED ALONG
THE TOP OF THE LENS AND THE 4 CORNERS OF THE
POLE ARE HIDDEN BY AN ACRYLIC STRIPE PRINTED
WITH THE SAME TEXTURE AS POLE.

OTHER COLORS AVAILABLE FOR EACH ON REQUEST

R G B Y W



24 VOLTS SYSTEM

THE LAMPPOST IS PREWIRED 24 VOLTS AND
INTEGRATES A UNIVERSAL TWIST - LOCK TENON FOR
QUICK AND SAFE WIRELESS CONNECTION.



ALUMINUM TAPERED POLE

NEW ARCHITECTURAL TAPERED POLE ASSEMBLY,
CHEMICALLY BOUNDED TOGETHER. TESTED TO
WITHSTAND GREATER LOADS AND WINDS ALMOST
TWICE THAT OF REGULAR ALUMINUM POLE.

(REFER TO OUR WEBSITE FOR TESTS)

DIGITAL PRINTING

DIGITALLY INKJET PRINTED SURFACES WITH
HIGH - DEFINITION IMAGES OF VARIOUS TEXTURES.



" DUROCLEAR " COATING

APPLICATION OF A PROTECTIVE UV CLEAR COAT
" DUROCLEAR " TO INCREASE LONG - TERM
DURABILITY, PROTECT AGAINST FADING AND
EXTEND LIFE WEATHERING.

DRIVER

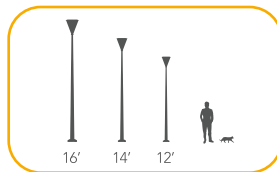
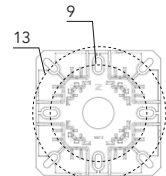
MOUNTED BEHIND THE ACCESS DOOR, THE DRIVER
INTEGRATES A DIMMER AND IS COMPATIBLE WITH
ANY REMOTE CONTROL SYSTEMS AVAILABLE IN THE
MARKET.



BASE PLATE AND BASE COVER

BOLT CIRCLES (IMAGE)

DIGITALLY PRINTED BASE COVER



ZILUXTM
AESTHETICALLY LUMINOUS

